

Karyological and RAPD-PCR analysis of five marine fishes species (Labridae-Perciformes) From Red Sea coral reef

Abdel-Basset, M. Ebied¹; Abu-Almaaty, A. H.²; Abu-El-Regal M. A³. & Zeinab A. Mar`ie⁴
1, 4- Cytogenetic Laboratory-Zoology Department- Faculty of Science(Qena) - South Valley University- Egypt

2- Zoology Department- Faculty of science- Port-said university 3- Marine Science Department, Faculty of Science, Port Said University

Abstract

Cytogenetic studies on five Red Sea reef fish species *Larabicus quadrilineatus*, *Hemigymnus melapterus*, *Thalassoma rueppellii*, *Thalassoma lunare* and *Gomphosus caeruleus* of the family Labridae (Perciformes) were carried out; all samples were collected from Hurghada, on the Egyptian Red Sea coast. All the specimens showed a diploid chromosome number of $2n=48$, they were also identical in the karyotype (all acrocentric), and in the Fundamental number $FN=48$. The RAPD-PCR analysis were carried out by using eight primers OPA12, 5'-TCGGCGATAG-3', OPA14, 5'-TCTGTGCTGG-3', OPA15, 5'-TTCCGAACCC-3', OPA17, 5'-GACCGCTTGT-3', OPA18 5'-AGGTGACCGT-3', OPA19 5'-CAAACGTCGG-3', OPA20, 5'-GTTGCGATCC-3' and OPO11, 5'-GACAGGAGGT-3'.

The results were extremely useful to improve the importance of using RAPD-PCR in genetic analysis among the species which are identical in chromosome number and karyotype.

INTRODUCTION

Approximately 1,000 species of fishes occur in Red Sea, many reef fishes exhibit considerable variation in colour, some have a very different pattern as juveniles, others such as wrasses (Labridae) may differ markedly in colour with sexual development (Randall, 1982) Because most morphologic features of fishes have been shown to have the potential of being modified by environmental conditions a morphologically based classification should be tested by features not likely to be environmentally plastic. Chromosome structure is likely to reflect genetic divergence and have a minimum of environmental distortion (Barker, 1972).

About 13,000 marine fish species exist (Nelson, 1994) and so far fewer than 2% of these have been studied cytogenetically (Brum, 1996). The diploid chromosome number varies from $2n=22-26$, in some species of Nototheniidae, an Antarctic fish group, to $2n=240-260$ in some anadromous Acipenseridae, which show several microchromosomes (Ozouf-Costaz *et al.*, 1997).

Despite the variation in chromosome number observed among marine fishes, some groups such as Perciformes, with almost 7000 marine species and comprising many living marine teleosts of economic importance, show little chromosome divergence. Approximately 60% of the Perciformes species showed a karyotype characterized by 48 uniarmed (acrocentric) chromosomes (Galetti *et al.*, 1999).

The use of molecular techniques has increased dramatically over the past several years, largely due to the development of the polymerase chain reaction (PCR). The random amplification of polymorphic DNA (RAPD), a methodology that employs a single short primer in PCR (Welsh and McClelland 1990; Williams *et al.*, 1990), has been widely used in several studies in animals including the

identification of fish species (Dinesh *et al.*, 1993; Borowsky *et al.*, 1995; Sultmann *et al.*, 1995; Partis & Wells, 1996 and Callejas & Ochando, 1998) and the detection of the population genetic variability in these organisms (Johnson *et al.*, 1994; Caccone *et al.*, 1997; Nadig *et al.*, 1998; Cagigas *et al.*, 1999 and Chong *et al.*, 2000).

The purpose of the present study was to describe the chromosomal complements of five species *Larabicus quadrilineatus* (four line wrasse), *Hemigymnus melapterus* (thick lip wrasse), *Thalassoma rueppellii* (klunzinger's wrasse), *Thalassoma lunare* (moon wrasse) and *Gomphosus caeruleus* (Red Sea bird wrasse) which are distributed in the Red Sea by using Giemsa staining and to utilize the RAPD-PCR analysis to verify the occurrence of genetic variations between the five species.

Materials and Methods

Five species of *Larabicus quadrilineatus*, *Hemigymnus melapterus*, *Thalassoma rueppellii*, *Thalassoma lunare* and *Gomphosus caeruleus* were collected from Red Sea (Egypt), transported to the laboratory of "National Institute of Oceanography and Fisheries (Red Sea Branch)" and kept alive until processed.

Chromosome preparation and staining:

Metaphases were obtained from cephalic kidney, spleen and gills after injection of 0.05% colchicines for approximately 2 hr, following the standard air-drying procedure Nirchio and Cequea (1998). chromosomal morphology was analysed through high quality spread photographs according to Leven *et al.*, (1964).

Polymerase Chain Reaction (PCR) protocol:

The genomic DNA was extracted using ALPHA DNA kits following the manufacturer's protocol. eight primers OPA12 ,5'- TCGGCGATAG -3', OPA14, 5'- TCTGTGCTGG - 3', OPA15, 5'- TTCCGAACCC - 3', OPA17,5'- GACCGCTTGT - 3', OPA18 5'- AGGTGACCGT -3', OPA19 5'- CAAACGTCGG - 3' , OPA20, 5- GTTGCGATCC - 3' and OPO11 5'- GACAGGAGGT - 3', were designed and worked consistently among Labrids species, yielding a product of 200 – 2700 base pairs. Thermal cycling in PCR reaction consisted of an initial step of 95 C for 1 min followed by 55 cycles of 20 s at 94 C, 30 s at 37 C and a final extension of 2 min at 72 C as described by Nadig *et al.*, 1998.

Each sample was analyzed in agarose gel prepared in 10 mM tris-HCL (ph 7.6), 10 mM EDTA, 0.005% bromophenol blue, 0.005% xylene cyand ff and 10% glycerol. The gel was stained with ethidium bromide (1%) though adding 2 ul of this stain/100ml agarose gel and photographed under ultraviolet light. The marker is composed of fourteen chromatography – purified individual DNA fragments (n base pairs): 3000, 2000, 1500, 1200, 1000, 900 ,800, 700,600,500,400,300,200,100, it contains two reference bands (1000 and 500 bp) for easy orientation .

Data analysis

The banding patterns generated by RAPD-PCR marker analyses were compared to determine the genetic relatedness of the 5 sample fish accessions. Clear and distinct amplification products were scored as '1' for presence and '0' for absence of bands. Bands of the same mobility were scored as identical.

The genetic similarity coefficient (GS) between two genotypes was estimated according to Dice coefficient (Sneath and Sokal, 1973).

Dice formula: $GS_{ij} = 2a/(2a+b+c)$

Where GS_{ij} is the measure of genetic similarity between individuals i and j, a is the number of bands shared by i and j, b is the number of bands present in i and absent in j, and c is the number of bands present in j and absent in i.

The similarity matrix was used in the cluster analysis. The cluster analysis was employed to organize the observed data into meaningful structures to develop taxonomies. At the first step, when each accession represents its own cluster, the distances between these accessions are defined by the chosen distance measure (Dice coefficient). However, once several accessions have been linked together, the distance between two clusters is calculated as the average distance between all pairs of accessions in the two different clusters. This method is called Unweighted Pair Group Method using Arithmetic Average (UPGMA) (Sneath and Sokal, 1973).

RESULTS

A diploid number of 48 acrocentric chromosomes ($FN = 48$) was observed by the chromosomal analysis in all studied specimens the spreads and karyotypes were illustrated in figs (1, 2, 3, 4 and 5).

The G+C contents of the eight primers were 60%. All eight primers amplified successfully on the genomic DNA extracted from all studied fish species. The eight primers yielded amplification products in the five species of the family Labridae. The number of fragments amplified per primer

varied between 5 (OPA-19) and 20 (OPA-18) (12.63 bands/primer) and had a size range from 200 bp (OPO-11) to 2500 bp (OPA-17). The DNA fragments generated by the eight primers from the genomic DNA of the five species were separated using Agarose gel electrophoresis and illustrated in figs (6, 7, 8, 9,10,11,12 and13).. The banding patterns of these DNA fragments were analyzed by Gene profiler computer software program and summarized in tables (2, 3, 4, 5,6,7,8 and9). The number and positions of the bands depended on species and primer as shown in these tables.

The number of bands was variable in each species. *T. lunare* was the species that produced the greatest number of bands (53), and *L. quadrilineatus* the lowest (42) while 52 bands in *H. melapterus*; 48 bands in *T. rueppellii*; and 48 bands in *G. caeruleus*. A total of 101 DNA bands were generated by all primers in all specimen, out of these DNA bands 62 (61.39%) were conserved among all specimens while 39 bands were polymorphic with percentage 38.61% of all the eight tested primers produced polymorphism in all specimens table10.

Following are the amplification results of the five species obtained by the examined primers:

Larabicus quadrilineatus

The eight primers produced 42 bands in *L. quadrilineatus*. The number of bands amplified per primer varied from 1 band by the primer OPA-19 to 9 bands by the primer OPO-11 and had a size arranged from 250 bp by the primer OPO-11 to 2000 bp by the primer OPA-15.

Hemigymnus melapterus

The eight primers produced amplification products with *H.melapterus* of 52 bands ranging from 1 fragment by the primer OPA-19 to 10 fragments by the primer OPA-14, the size of fragments varied from 250 bp by the primer OPO-11 to 2500 bp by the primers OPA-14 and OPA-17.

Thalassoma rueppellii

All the primers amplified successfully yielded distinct RAPD patterns with *T. rueppellii*, the eight primers generated 48 fragments, the number of fragments varied from 2 by the primer OPA-19 to 9 by the primer OPA-14. The size of fragments ranged from 200 bp by the primer OPO-11 to 1900 bp by the primer OPA-17.

Thllassoma lunare

The RAPD-DNA analysis of *T.lunare* indicated that it produced 53 fragments with all eight primers, varied in number from 3 by the primer OPA-15 to 11 by the primer OPO-11, the size of these fragments ranged from 300 bp by the primers OPA-14, OPA-19 and OPA-20 to 2000 bp by the primers OPA-18 and OPA-20.

Gomphosus caeruleus

Random amplified polymorphic DNA (RAPD) technique was used to examine the genetic variability on *G. caeruleus* produced different RAPD band patterns of number of 48 bands ranged approximately from 200 bp by the primer OPO-11 to 1900 bp by the primer OPA-17. The generated bands ranged in number from 1 by the primer OPA-19 to 12 by the primer OPA-18.

The Dice coefficient illustrated the genetic similarity between the five species, and the UPGMA clustering pattern are shown in Table (11) and Figure (14). The highest genetic similarity was observed between *L. quadrilinus* and *G. caeruleus* (62%) and the lowest between *L. quadrilinus* and *T. rueppellii* (42%). The UPGMA dendrogram shows two groups, group A in which *Hemigymnus melapterus* and

Thalassoma lunare were clustered together, group B which consists of two clusters one contained *Larabicus quadrilineatus* alone while the other contained *Thalassoma rueppellii* and *Gomphosus caeruleus* indicating the close genetic relationship among species.

To the best of author knowledge these results are reported for the first time in Egypt, this investigation confirmed that the polymerase chain reaction is very important nowadays to the taxonomists specially in sibling species in addition to the morphological and anatomical characters.

Discussion

Karyotyping analysis:

There have been several studies in recent times on the cytogenetic studies in the teleostei fishes, Oliveira *et al.*, (2000). The karyotype with $2n = 48$ acrocentric chromosomes is considered by some authors an inheritance of the first vertebrates (Ohno *et al.*, 1968; Ohno, 1970; Ohno, 1974). However, Brum (1996) and Brum and Galetti (1997) proposed that this karyotype was a synapomorphy of the groups Euteleostei and Clupeiformes conserved mainly in their marine species, which the karyotype derived from a likely ancestry of the vertebrates initially with 60 chromosomes, including the metacentric chromosomes. According to Brum (1995) and Brum *et al.* (1995), the karyotypes derived from this basal complement (48 acrocentric chromosomes) containing two armed chromosomes and resulting in a FN higher than 48 have been found in the groups of the fresh water fishes, where there are many environmental fragmentations, and also in the marine fishes with low vagility that occur in the restricted areas (Galetti *et al.*, 1999). In the marine environment, the karyotypic conservation is related to the existence of physical barriers, high mobility, high size of the population and higher homogeneity of the environment conditions (Brum, 1996). The results obtained in the present study showed karyotypes with $2n = 48$ chromosomes in the Labridae. The Family Labridae (Wrasses) contains approximately 500 species distributed in to 60 genera, and so far only 47 species (belonging to 21 genera) of them are cytogenetically studied (Vasil'ev, 1980; Ojima & Kashiwagi, 1989; Manna, 1989; Klinkhardt *et al.*, 1995; Brum, 1996 and Arkhipchuk, 1999). The degree of karyotypic differentiation (number of changes in FN values) in the Family Labridae is inversely related to the dispersive potential provided by the extent of pelagic larval duration of each species (Molina & Galetti, 2004; Molina, 2006 and Sena & Molina 2007). In the Family Labridae, although most species have been reported with $2n=48$, the number of chromosome arms (FN) is often higher (48-90), indicating a predominant occurrence of pericentric inversion within this group, Alvarez *et al.*, 1986 (Table 1).

RAPD-PCR analysis:

The RAPD technique for examining genetic variability showed a number of advantages including: no prior knowledge of the DNA sequences of the investigated organism is needed (Welsh and McClelland, 1990); its assay is relatively simple, rapid and independent of gene expression (Goodwin and Annis, 1991); and only a small amount of DNA is required to perform the reaction (Pinochet *et al.*, 1994). The results observed show that the RAPD-PCR assay is capable of revealing polymorphism in species of fishes. The eight primers produced at least two polymorphic fragments.

Some authors have pointed out that, although RAPD-PCR is a powerful technique for detecting random amplified polymorphic DNA and several reasons exist for the amplification of DNA regions, the main shortcoming of this technique is its sensitivity to changes in reaction conditions, where the use of markers often results in imperfect estimation of genetic distances between taxa of supraspecies rank (Rothuizen and Van Wolferen, 1994). In our experiments the results obtained by optimized and repeatable conditions made differences in banding patterns an improbable RAPD artifact.

RAPD bands in this study were always variant (i.e., strong, faint, fuzzy and sharp bands) generated with each primer because one or more copies of DNA may exist per genome or may be attributed to the varying of the annealing process between the primer and the DNA. This problem of mixed bands shows the well known sensitivity of PCRs (Bielawski *et al.*, 1995). RAPD fragments generated by OPA-14 primer produced low polymorphism (15.38%) among the studied fishes. This primer sequences may have annealed to variable sequences which might be of great utility at lower taxonomic levels, e.g. for the differentiation of very related species, however, in RAPD fragments generated by other primers, there were high degree of polymorphism their sequences may be considered as more conserved sequences, which are most useful in higher taxonomic levels and evolutionary relationships.

References

- Alvarez, M. C.; Garcia, E. and Thode, G. (1986): Contribution to the karyotypes of *Ctenolabrus rupestris* and *Symphodus ocellatus*. Caryologia, (39) 353-357.
- Arkhipchuk, V.V. (1999): Chromosome database. Database of Dr. Victor Arkhipchuk.
- Barker, C. J. (1972): Karyology of three Galaxiid fishes *Galaxias maculatus*, *G. platei* and *Brachygalaxias bullocki*. Ministry of Agriculture, fisheries and food, fisheries Radiobiological laboratory, Lowestoft, Suffolk, England. Copeia. No. 2, 368-371.
- Bielawski, J.P.; Noach, K. and Pumo, D.E. (1995): Reproducible amplification of RAPD markers from vertebrate DNA. Biotechniques, 12:36-39.
- Borowsky, R. L.; McClelland, M.; Cheng, R. and Welsh, J. (1995): Arbitrarily primed DNA fingerprinting for phylogenetic reconstruction in vertebrates: the Xiphophorus model. Mol. Biol. Evol. 12, 1022-1032.
- Brum, M. J. I. (1995): Correlações entre a Filogenia e a Citogenética de Peixes Teleósteos. Res. Bras. Genet. – Série Monografias 2: 5-42.
- Brum, M. J. I.; Corrêa, M. M. O.; Oliveira, C. C. and Galetti Jr, P. M. (1995): Cytogenetics Studies on the Perciformes *Orthopristis ruber* (Haemulidae) and *Scartella cristata* (Blenniidae). Caryologia, 48 (3-4): 309-318.
- Brum, M. J. I. (1996): Cytogenetic studies of Brazilian marine fish. Braz. J. Genet., 19(3) 421-427.

- Brum, M. J. I. and Galetti Jr., P. M. (1997):** Teleostei Ground Plan Karyotype. J. Comp. Biol. 2(2): 91-102.
- Caccone, A.; Allegrucci, G.; Fortunato, C. and Sbordoni, V. (1997):** Genetic differentiation within the European sea bass (*D. labrax*) as revealed by 14 RAPD-PCR assay. J. Heredity 88, 316-324.
- Cagigas, M. E.; Vasquez, E.; Blanco, G. and Sanchez, J. A. (1999):** Combined assessment of genetic variability in populations of brown trout (*Salmo trutta L.*) based on allozymes microsatellites, and RAPD markers. Mol. Biotech. 1, 286 -296.
- Callejas, C. and Ochando, M. D. (1998):** Identification of Spanish barbell species using the RAPD technique. J. Fish Biol. 53, 208-215.
- Cano, J.; Thode, G. and Alvarez, M.C. (1982):** Karyoevolutive consideration in 29 mediterranean teleost fishes. Vie Milieu 32, 21-24.
- Cataudella, S.; Civitelli, M. V. and Capanna, E. (1973):** The chromosomes of some Mediterranean Teleosts: Scorpaenidae, Serranidae, Labridae, Blenniidae, Gobiidae (Pisces- Scorpaeniformes, Perciformes). Boll. Zool., 40:385-389.
- Chong, L. K.; Tan, S. G.; Yosoff, K. and Siraj, S. S. (2000):** Identification and characterization of Malaysian river catfish, *Mystus nemurus* (C&V): RAPD and AFLP analysis. Biochem. Genet. 38, 63-76.
- Debelius, H. (2007):** Red Sea reef guide. Fourth revised edition published in England.
- Dinesh, K.R.; Lim, T.M.; Chua, K.L.; Chan, W.K. and Phang, V.P. (1993):** RAPD analysis: an efficient method of DNA fingerprinting in fishes. Zool. Sci. 10, 849-854.
- Duchac, B.J.; Haber, F.; Muller, H. and Sena D. (1982):** Mating behavior and cytogenetical aspects of sex-inversion in the fish *Coris julis L.* (Labridae, Teleostei). Cell. Mol. Life Sci. 38(7), 809-811.
- Galetti Jr, P. M.; Aguilar, C. T. and Molina, W. F. (1999):** An Overview of Marine Fish Cytogenetics. Hydrobiologia, 20: 1-8.
- Goodwin, P.H. and Annis, S.L. (1991):** Rapid identification of genetic variation and pathotype of *Leptosphaeria maculans* by random Amplified Polymorphic DNA assay. Appl. Environ. Microbiol. 57:2452-2486.
- Johnson, S.L.; Midson, C.N.; Ballinger, E.W. and Postlethwait, J. H. (1994):** Identification of RAPD primers that reveal extensive polymorphisms between laboratory strains of zebrafish. Genomics 19, 152-156.
- Klinkhadar, M. B.; Tesche, M. and Greven, H. (1995):** Database of fish chromosomes, Westarp Wissenschaften, Magdeburg.
- Kushawaha, B.; Kumar, R.; Nagpure, N.S.; Satish, K.S.; Basheer, V.S.; Anil, M.K. and Lakara, W.S. (2011):** Chromosomal studies of three vulnerable marine fishes from west coast of India. Indian Journal of Geo-Marine Sciences vol. 40 (1): 62-66.
- Levan, A.; Fredga, A. and Sandburg, A. (1964):** Nomenclature for centromeric position on chromosomes. Hereditas, 52; 201-220.
- Lopez, J.R.; Alvarez, M.C.; Thode, G. and Martinez, G. (1989):** Karyotype divergence in *Symphodus melops* and *Symphodus roissali* (Labridae: Perciformes): C-banded and Ag-NOR karyotypes. Genome 32, 35-39.
- Manna, J. K. (1989):** Fish cytogenetics related to taxonomy, evolution and monitoring aquatic genotoxic agents. P 21-46.
- Molina, W. F. (2006):** Chromosomal changes and stasis in marine fish groups, In: Fish cytogenetics (Pisano E., Ozouf-Costaz C., Forest F. and Kapoor BG, eds.). Science Publishers, Enfield 69-110.
- Molina, W. F. and Galetti, P. M. Jr. (2004):** Multiple pericentric inversions and chromosomal divergence in the reef fishes *Stegastes* (Perciformes, Pomacentridae), Genet. Mol. Biol., (27) 543-548.
- Nadig, S.G.; Lee K. L. and Adams S.M. (1998):** Evaluating alterations of genetic diversity in sunfish populations exposed to contaminants using RAPD assay. Aquatic Toxicol. 43, 163-178.
- Nelson, J. (1994):** Fishes of the World, 3rd ed. Wiley, New York. John Wiley & Sons ISBN 0471547131.
- Nirchio, M. and Cequea, H. (1998):** Karyology of *Mugil liza* and *M. curema* from Venezuela. Bol. Inv. Mar. Cost., 27: 45-50.
- Ohno, S.; Wolf, U. and Atkin, N. B. (1968):** Evolution From Fish To Mammals By Gene Duplication. Hereditas, 59, 169-187.
- Ohno, S. (1970):** Evolution by Gene Duplication. New York, Springer-Verlag, 160pp.
- Ohno, S. (1974):** Protochordata, Cyclostomata and Pisces. In John, B. (Ed.). Animal Cytogenetic 4(1), 1-92.
- Ojima, Y. (1983):** Fish cytogenetics. In: Sharma, A.K., Sharma, A. (Eds.), Chromosomes in evolution of Eukaryotic groups. CRC Press, Boca Raton, pp, 111-145.
- Ojima, Y. and Kashiwagi, E. (1980):** Further studies of the chromosome of the Labridae (Pisces). A preliminary note. Proc. Jpn. Acad. 56: 328-331.
- Ojima, Y. and Kashiwagi, E. (1989):** Further Studies of the chromosomes of the Labridae (Pisces), Proc. Japan Acad., 56 Ser. P 328-331.
- Oliveira, C.; Almeida-Toledo, L. F. and Foresti, F. (2000):** Revisão dos Estudos Citogenéticos em Peixes Neotrópicos de Águas Continentais. In: VIII Simpósio de Citogenética e Genética de Peixes, Instituto Nacional de Pesquisas Amazônicas, p.119.
- Ozouf-Costaz, C.; Pisano, E.; Thaeron, C. and Hureau, J.C. (1997):** Antarctic fish chromosome banding. Significance for evolutionary studies. Cytium 21: 399-409.
- Partis, L. and Wells R.J. (1996):** Identification of fish species using random amplified polymorphic DNA (RAPD). Mol. Cell Probes 10, 435-441.

Pinochet, P.; Cennis, J.L.; Fernandez, C.; Doucet, M. and Marull, J. (1994): Reproductive fitness and random amplified polymorphic DNA variation among isolates of *Pratylenchus vulnus*. *J. Nematol.* 26:271-277.

Ramon, R.C. (2002): Chromosome analysis of the sexual phases of the protogynous hermaphrodites *Epinephelus guttatus* and *Thalassoma bifasciatum* (Serranidae and Labridae, Teleosti). *Caribbean Journal of Science*, vol. 38, no.1-2, 44-51.

Randall, E.(1982): The diver guide to Red Sea reef fishes. Publishing limited 20 Berkely Street, Berkeley square London W1X 5AE.

Rothuizen, J. and Van Wolferen, M. (1994): Randomly amplified DNA polymorphisms in dogs are reproducible and display Mendelian transmission. *Anim. Genet.* 25: 13-18.

Sena, D.C.S. (2003): Diversificacao cariotipica em species das familias Labridae e Scaridae (Pisces: Perciformes), do Atlantico Ocidental. Master Thesis, Universidade Federal do Rio Grande do Norte, Rio Grande do Norte.73pp.

Sena, D.C. and Molina, W.F. (2007): Robertsonian rearrangements and pericentric inversions in Scaridae fish (Perciformes), *Genet. Mol. Res.* (6) 575-580.

Sena, D. C. and Molina, W. F. (2007): Chromosomal rearrangements associated with pelagic larval duration in Labridae (Perciformes). *Journal of Experimental Marine Biology and Ecology* vol.353, Issue 2, pp: 203-210.

Sneath, P. H. A. and Sokal, R. R. (1973): Numerical taxonomy; the principles and practice of numerical classification. San Francisco: Freeman Medical Research Council Microbial systematic Unit. Leicester, England and Dept. Ecology and Evolution State Univ. New York, Stony Brook, NY.

Sultmann,I.L.;Mayer, W.E.;Figueroa,F.; Tichy,I.L. and Klein, J.(1995): Phylogenetic analysis of Cichlid fishes using nucleolar DNA markers. *Mol. Biol.Evol.* 12, 1033-1047.

Ueno, K. and Takai, A. (2000): Chromosomal evaluation involving Robertsonian rearrangements in *Xyrichthys* fish (Labridae, Perciformes). *Cytobios*, 103(402):7-15.

Vasil`ev, V.P. (1980): Chromosome numbers in fish-like vertebrates and fish.*J.Ichthyol.*, 20 (3) 1-38.

Wasko, A. P. and Galetti, P. M. (2003): PCR primed with minisatellite core sequences yields species-specific pattern and assessment of population variability in fishes of the genus *Brycon*. *J. Appl. Ichthyol.* 19, 109 -113.

Welsh,J. and McClelland,M.(1990): Fingerprinting genomes using PCR with arbitrary primers. *Nucleic Acids Res.* 18, 7213 -7218.

Williams, J.G.K.; Kubelik, A.R.; Livak,K.J.;Rafalski, J.A. and Tingey, S.V.(1990): DNA polymorphisms amplified by arbitrary primers are useful as genetic markers. *Nucleic Acids Res.* 18, 6531-6535.

Species	Locality	2N	FN	Karyotypic Formula	Reference
<i>Bodianus axilaris</i>		48	86	8m+30 sm+10st/a	Ojima and Kashiwagi, 1980
<i>B. loxozonus</i>		48	82	8m+26sm+14st/a	Ojima and Kashiwagi, 1980
<i>B. mesothorax</i>		48	74	8m+18sm+22st/a	Ojima and Kashiwagi, 1980
<i>B. rufus</i>		48	80	8m+14 sm+10st+16a	Sena,2003
<i>B. insularis</i>		48	78	6m+14 sm+10st+18a	Sena,2003
<i>Cheilinus bimaculatus</i>		32	38	4m+2sm+26st/a	Ojima and Kashiwagi, 1980
<i>C. fasciatus</i>		48	60	12sm+34st/a	Ojima, 1983
<i>Cirrhilabrus cyanopleura</i>		34	46	10m+2sm+22st/a	Ojima and Kashiwagi, 1980
<i>C. temminckii</i>		34	46	10m+2sm+22st/a	Ojima and Kashiwagi, 1980
<i>Crenilabrus melops</i>	Mar Tirreno, Nettynol (Roma)	46	56	10 m and 36 st	Cataudella <i>et al.</i> ,1973
<i>C. griseus</i>		48	76	2m+26sm+20st/a	Klinkhardt <i>et al.</i> , 1995
<i>C. ocellatus</i>		38	84	36m/sm/st+12a	Klinkhardt <i>et al.</i> , 1995
<i>C. quinquemaculatus</i>		38	74	14m+22sm+2st	Klinkhardt <i>et al.</i> , 1995
<i>C. tinca</i>		48	82	34m/sm/st+14a	Klinkhardt <i>et al.</i> , 1995
<i>Epibulus insidiator</i>		48	60	4m+8sm+36st/a	Klinkhardt <i>et al.</i> , 1995
<i>Hemipteronotus dea</i>		44	44	44st/a	Ojima and Kashiwagi, 1980
<i>H. taeniurus</i>		48	52	45m+44st/a	Ojima and Kashiwagi, 1980
<i>Symphodus mediterraneus</i>		46	52	6m/sm+40st/a	Cano <i>et al.</i> , 1982
<i>S. melops</i>		46	92	46m/sm	Lopez <i>et al.</i> , 1989
<i>S. roissali</i>		38	76	10m+28m/sm/st	Lopez <i>et al.</i> , 1989
<i>S. scina</i>		48	86	2m+36sm+10st/a	Klinkhardt <i>et al.</i> , 1995
<i>Xyrichthys pavo</i>		48	56	8sm+40a	Klinkhardt <i>et al.</i> , 1995
<i>X. dea</i>	Nara, Japan	44	44	44a	Vitturi <i>et al.</i> , 1989
<i>X. twistii</i>		44	44	44a	Ueno and Takai,2000
<i>X. novacula</i>		22	40	18m/sm+4a	Ueno and Takai,2000
<i>Cheilio inermis</i>		48	72	12m+12sm+24st/a	Ojima and Kashiwagi, 1980
<i>Coris aygula</i>		48	60	6m+6sm+36st/a	Ojima, 1983
<i>C. gaimardi</i>		48	60	2m+10sm+36st/a	Ojima and Kashiwagi, 1980
<i>C. julis</i>	Mar Tirreno, Civitavecchia	48	58	10m/sm+38st/a	Duchac <i>et al.</i> ,1982
<i>C. multicolor</i>		48	62	6m+8sm+34st/a	Ojima and Kashiwagi, 1980
<i>Gomphosus varius</i>		48	48	48st/a	Ojima and Kashiwagi, 1980
<i>Halichoeres radiates</i>	Brazilian coastline	48	48	48a	Sena & Molina, 2007
<i>H. brasiliensis</i>		48	48	48a	Sena & Molina, 2007
<i>H. poeyi</i>		48	52	4m+44st/a	Sena & Molina, 2007
<i>H. centriquadus</i>		48	48	48st/a	Ojima and Kashiwagi, 1980
<i>H. kallochroma</i>		48	48	48st/a	Ojima and Kashiwagi, 1980
<i>H. melanochir</i>		48	50	2m+46st/a	Ojima and Kashiwagi, 1980
<i>H. poecilopterus</i>		48	54	4m+2sm+42st/a	Ojima and Kashiwagi, 1980
<i>H. prosopeion</i>		48	50	2m+46st/a	Ojima and Kashiwagi, 1980
<i>H. tenuispinnis</i>		48	50	2m+46st/a	Ojima and Kashiwagi, 1980
<i>H. trimaculatus</i>		48	48	48st/a	Ojima and Kashiwagi, 1980
<i>Hemigymus fasciatus</i>		48	60	6m+6sm+36st/a	Ojima, 1983
<i>Hologymnosus semidiscus</i>		48	86	8m+30sm+10st/a	Ojima and Kashiwagi, 1980
<i>Labroides dimidiatus</i>		48	48	48st/a	Ojima and Kashiwagi, 1980
<i>Pseudolabrus japonicas</i>		48	52	2m+2sm+44st/a	Ojima and Kashiwagi, 1980
<i>Stethojulis banddanesis</i>		48	52	4m+44st/a	Ojima and Kashiwagi, 1980
<i>S. interrupta</i>		48	50	2sm+46st/a	Ojima and Kashiwagi, 1980
<i>S. strigiventer</i>		48	50	2m+46st/a	Ojima and Kashiwagi, 1980
<i>Thalassoma cupid</i>		48	48	48st/a	Ojima and Kashiwagi, 1980
<i>T. amblycephalum</i>		48	48	48st/a	Ojima and Kashiwagi, 1980
<i>T. lunare</i>		48	48	48st/a	Ojima and Kashiwagi, 1980
<i>T. lutescens</i>		48	48	48st/a	Ojima and Kashiwagi, 1980
<i>T. pavo</i>		48	48	48a	Cano <i>et al.</i> , 1982
<i>T. bifasciatum</i>		48	48	48a	Ramon, 2002
<i>uniquievittatum</i>	South-West Puerto Rico	48	48	48st/a	Ojima and Kashiwagi, 1980
<i>Thalassoma lunare</i>	West coast of India	48	48	48 a.	Kushwaha <i>et al.</i> , 2011
<i>Zanclus cornutus</i>		48	48	48 a.	
<i>Arius subrostratus</i>		54	96	22 m+16 sm+10 st+10a.	

<i>Larabicus quadrilineatus</i>	Hurghada, Red Sea, Egypt.	48	48	48 a.	Present study
<i>Hemigymnus melapterus</i> ,		48	48	48 a.	
<i>Thalassoma rupellei</i> ,		48	48	48 a.	
<i>Thalassoma lunare</i> and		48	48	48 a.	
<i>Gomphosus caeruleus</i>		48	48	48 a.	

(2N) diploid number, (FN) fundamental number, (a) acrocentric, (st) subtelocentric, (sm) sub-metacentric and (m) metacentric.

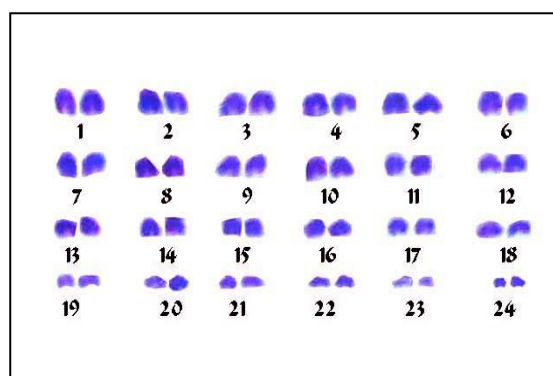
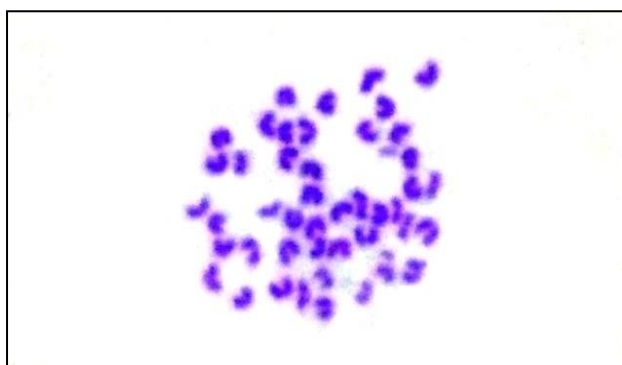


Fig (1): A coloured photograph, Chromosomes spread and karyotype of *Larabicus quadrilineatus*

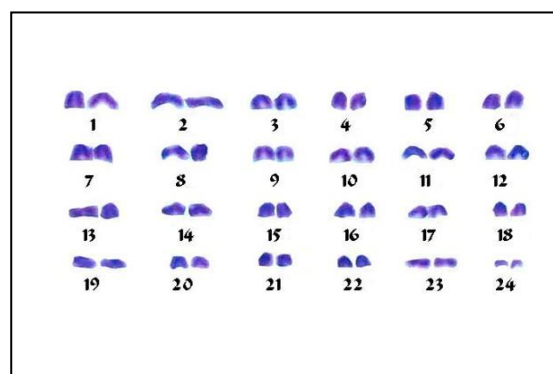
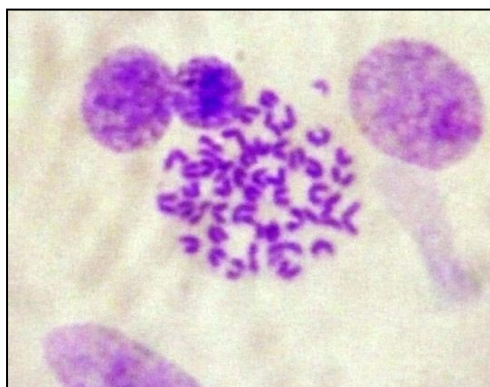
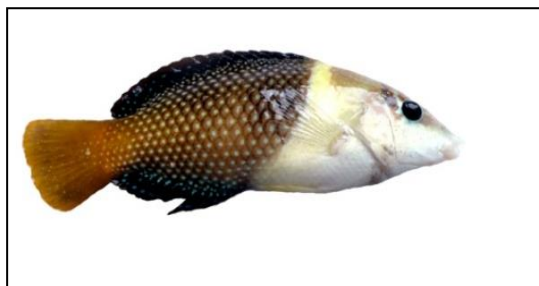


Fig (2) A coloured photograph, Chromosomes spread and karyotype of *Hemigymnus melapterus*

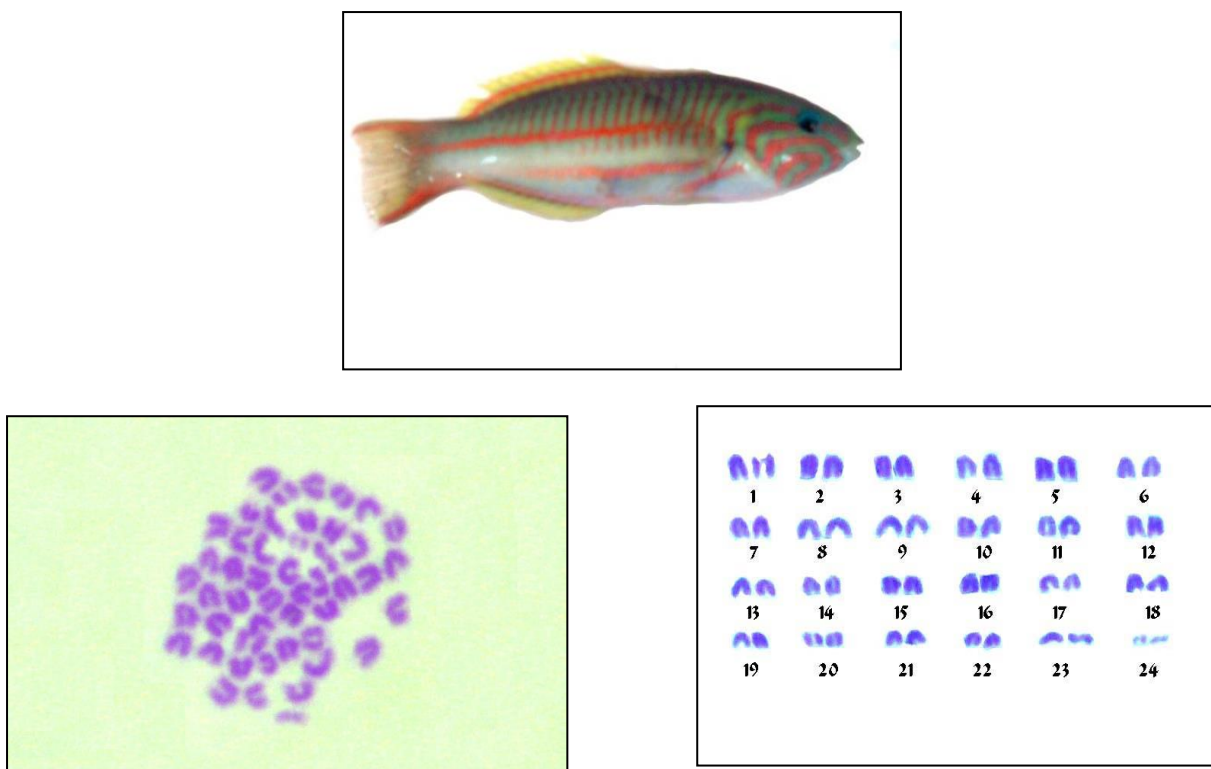


Fig (3) A coloured photograph, Chromosomes spread and karyotype of *Thalassoma rupellei*

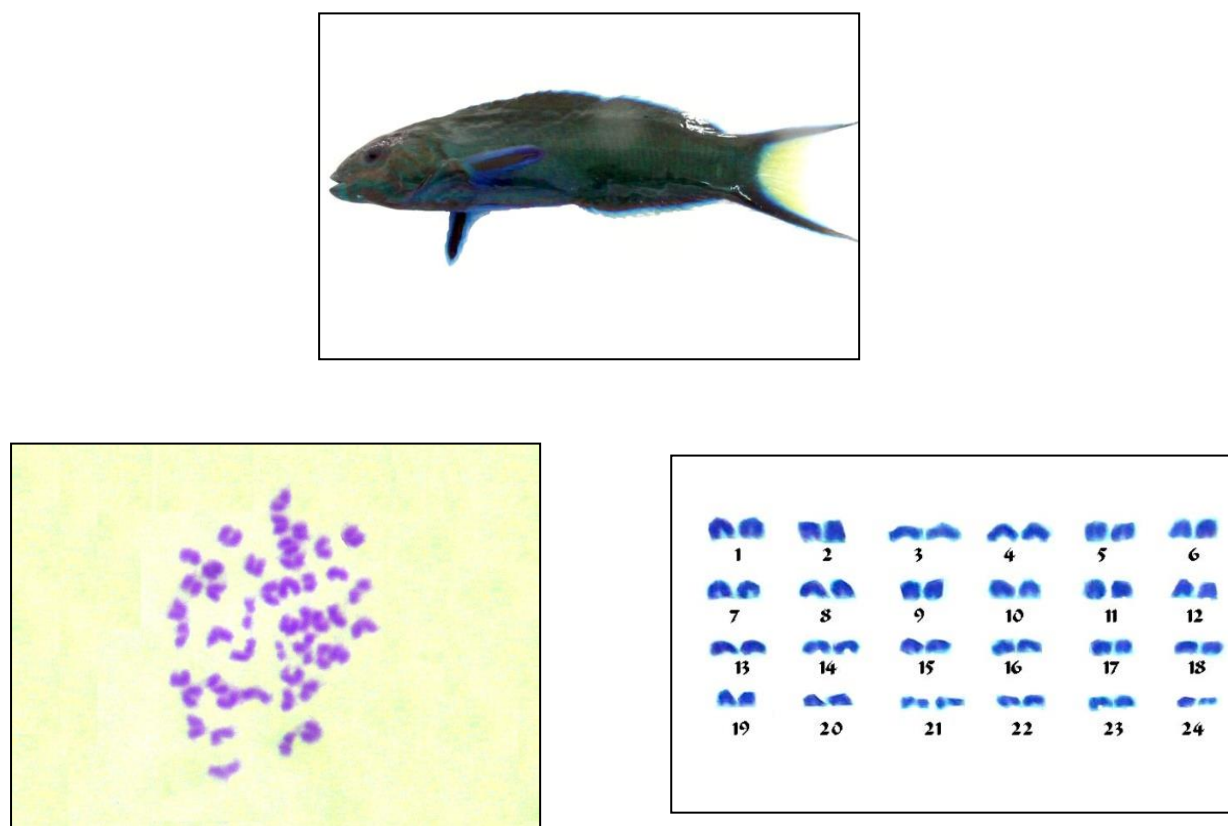


Fig (4) A coloured photograph, Chromosomes spread and karyotype of *Thalassoma lunare*

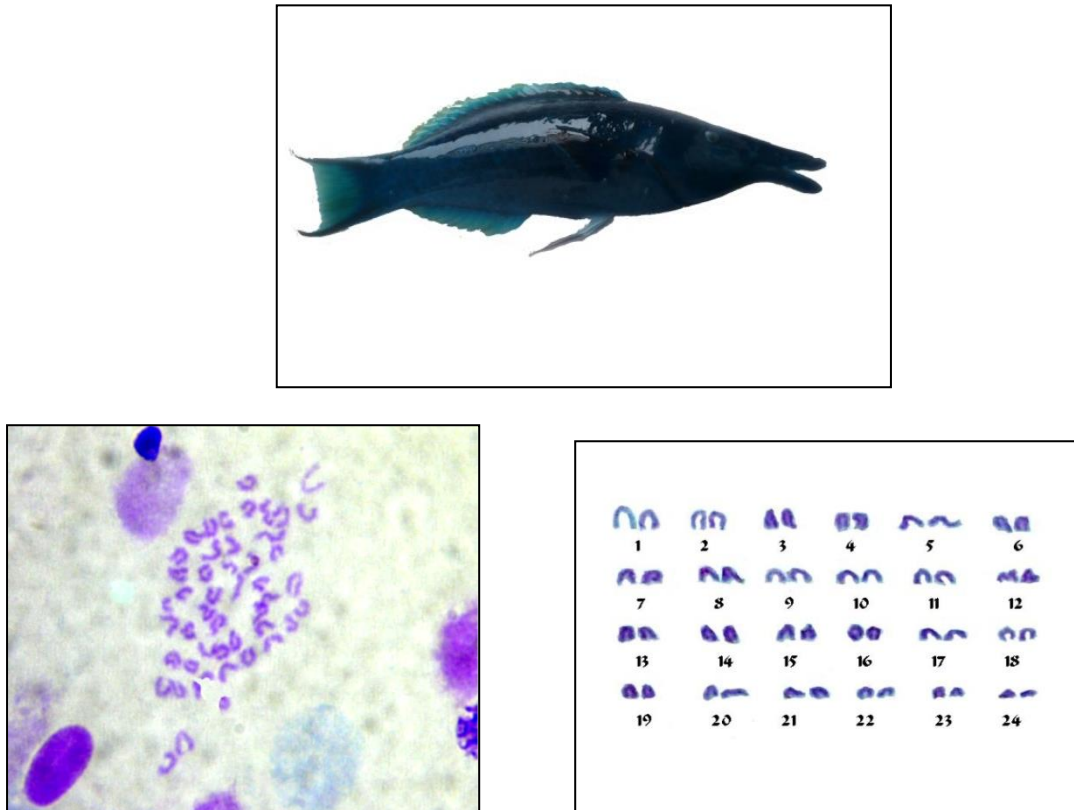


Fig (5) A coloured photograph, Chromosomes spread and karyotype of *Gomphosus caeruleus*

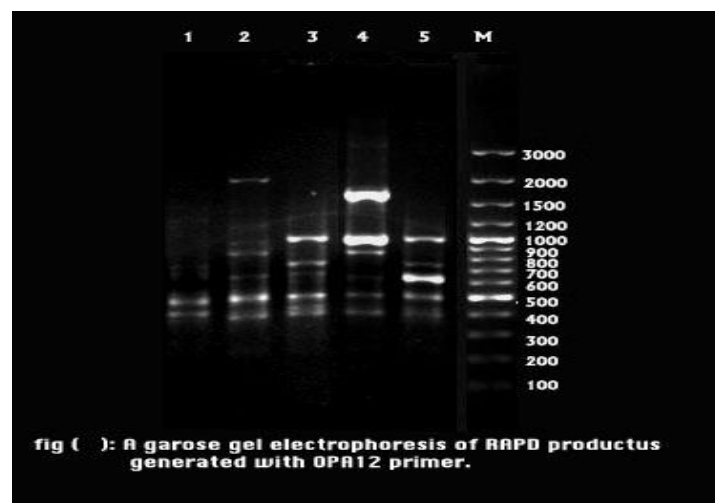


Fig (6): Agarose gel electrophoresis of RAPD products generated with OPA-12.
Where 1- *Larabicus quadrilineatus*, 2- *Hemigymnus melapterus* 3- *Thalassoma rueppellii*,
4- *Thalassoma lunare*, 5- *Gomphosus caeruleus*.

Table (2): Survey of RAPD markers using primer OPA-12 of five labrids specimens.

<i>Band No.</i>	<i>RAPD marker base pair</i>	<i>L. quadrilineatus</i>	<i>H. melapterus</i>	<i>T. rupellei</i>	<i>T. lunare</i>	<i>G. caeruleus</i>
1	2000	0	1	0	0	0
2	1600	0	0	0	1	0
3	1050	0	1	1	1	1
4	880	0	1	0	1	0
5	750	1	0	1	0	1
6	600	1	1	1	1	1
7	530	0	0	1	0	0
8	400	1	1	1	1	1
9	350	1	0	1	0	1
10	310	0	1	1	1	1

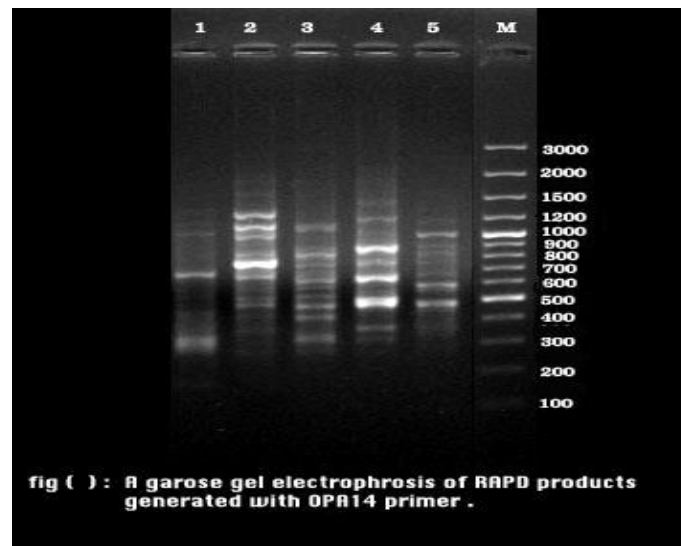


Fig (7): Agarose gel electrophoresis of RAPD products generated with OPA-14.

Table (3): Survey of RAPD markers using primer OPA-14 of five labrids specimens.

<i>Band No.</i>	<i>RAPD marker base pair</i>	<i>L. quadrilineatus</i>	<i>H. melapterus</i>	<i>T. rupellei</i>	<i>T. lunare</i>	<i>G. caeruleus</i>
1	2500	0	1	0	0	0
2	1350	0	1	0	0	0
3	1150	1	1	1	1	1
4	1050	1	1	0	1	1
5	970	1	1	1	1	0
6	860	0	1	1	1	1
7	780	0	1	1	1	1
8	700	1	0	1	1	1
9	600	0	0	1	1	1
10	500	0	1	1	1	1
11	430	0	1	1	0	0
12	360	0	1	0	1	0
13	300	1	0	1	1	0

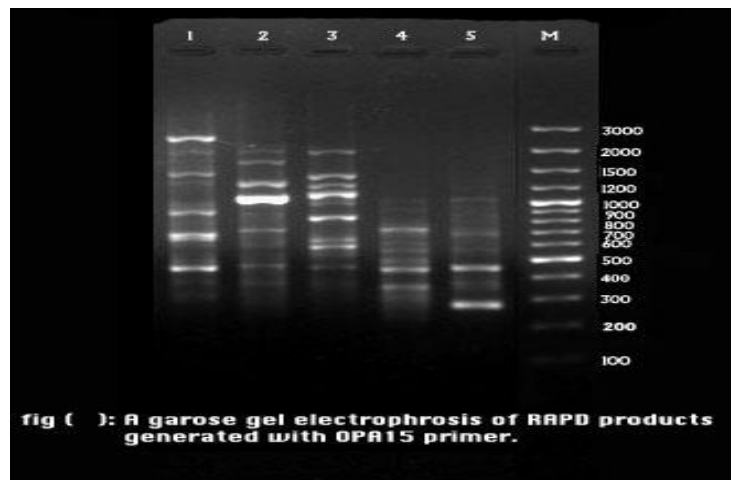


Fig (8): Agarose gel electrophoresis of RAPD products generated with OPA-15.

Table (4): Survey of RAPD markers using primer OPA-15 of five labrids specimens.

Band No.	RAPD marker base pair	<i>L. quadrilineatus</i>	<i>H. melapterus</i>	<i>T. rupellei</i>	<i>T. lunare</i>	<i>G. caeruleus</i>
1	2000	1	0	0	0	0
2	1700	1	1	1	0	0
3	1400	0	1	0	0	0
4	1300	1	0	1	0	0
5	1000	0	1	1	0	0
6	900	1	0	0	0	0
7	700	0	1	0	0	0
8	650	1	1	1	0	0
9	600	0	0	1	0	0
10	550	0	0	0	1	0
11	500	1	1	1	1	1
12	350	1	1	0	1	1
13	280	0	0	0	0	1

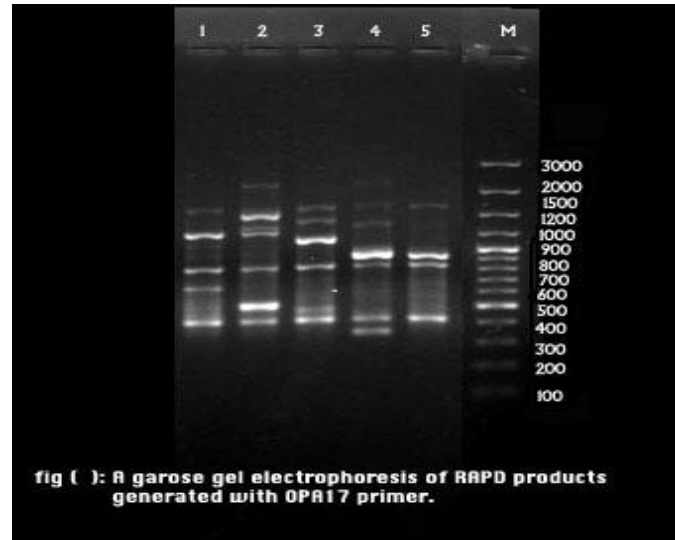


Fig (9): Agarose gel electrophoresis of RAPD products generated with OPA-17.

Table (5): Survey of RAPD markers using primer OPA-17 of five labrids specimens.

Band No.	RAPD marker base pair	<i>L. quadrilineatus</i>	<i>H. melapterus</i>	<i>T. rupellei</i>	<i>T. lunare</i>	<i>G. caeruleus</i>
1	2500	0	1	0	0	0
2	1900	1	1	1	1	1
3	1500	0	1	1	1	0
4	1200	1	1	0	0	0
5	1000	0	0	1	0	0
6	760	0	0	0	1	1
7	700	1	1	1	1	1
8	500	1	0	0	0	0
9	450	0	1	0	0	0
10	400	0	0	1	0	0
11	350	1	1	1	1	1
12	300	0	0	0	1	0

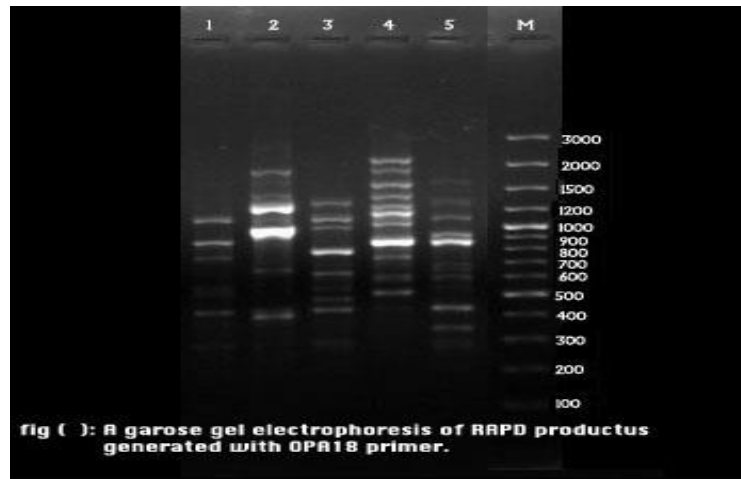


Fig (10): Agarose gel electrophoresis of RAPD products generated with OPA-18.

Table (6): Survey of RAPD markers using primer OPA-18 of five labrids specimens.

Band No.	RAPD marker base pair	<i>L. quadrilineatus</i>	<i>H. melapterus</i>	<i>T. rupellei</i>	<i>T. lunare</i>	<i>G. caeruleus</i>
1	2000	0	0	0	1	0
2	1900	0	0	0	1	0
3	1750	0	1	0	1	0
4	1500	0	1	0	1	1
5	1400	0	1	0	1	0
6	1250	0	1	0	1	1
7	1150	1	0	1	0	1
8	1050	1	1	1	0	1
9	950	0	1	0	0	1
10	870	0	1	0	0	1
11	800	1	0	0	1	1
12	760	0	0	1	0	0
13	700	0	0	0	1	0
14	620	1	0	0	0	1
15	550	0	0	0	0	1
16	500	1	0	1	0	1
17	450	0	0	1	1	0
18	370	0	1	0	0	0
19	320	0	0	0	0	1
20	250	1	0	1	0	1

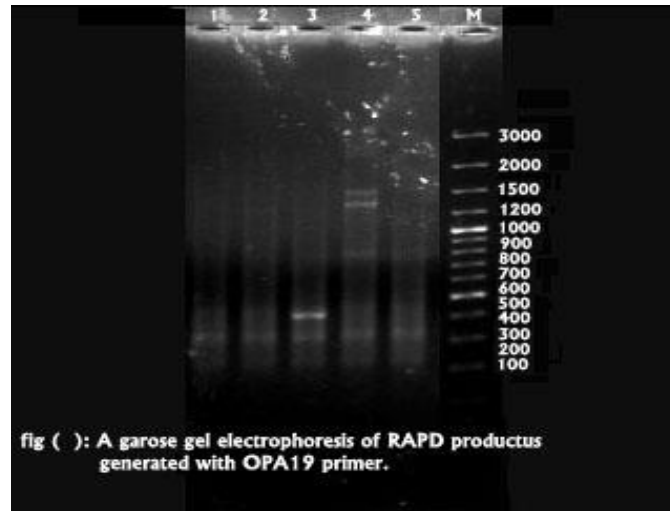


Fig (11): Agarose gel electrophoresis of RAPD products generated with OPA-19.

Table (7): Survey of RAPD markers using primer OPA-19 of five labrids specimens.

<i>Band No.</i>	<i>RAPD marker base pair</i>	<i>L. quadrilineatus</i>	<i>H. melapterus</i>	<i>T. rupellei</i>	<i>T. lunare</i>	<i>G. caeruleus</i>
1	1600	0	0	0	1	0
2	1400	0	0	0	1	0
3	900	0	0	0	1	0
4	400	0	0	1	0	0
5	300	1	1	1	1	1

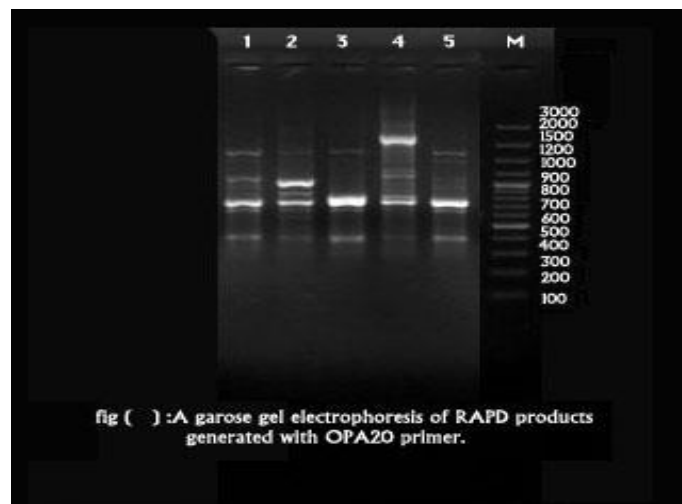


Fig (12): Agarose gel electrophoresis of RAPD products generated with OPA-20.

Table (8): Survey of RAPD markers using primer OPA-20 of five labrids specimens.

<i>Band No.</i>	<i>RAPD marker base pair</i>	<i>L. quadrilineatus</i>	<i>H. melapterus</i>	<i>T. rupellei</i>	<i>T. lunare</i>	<i>G. caeruleus</i>
1	2000	0	0	0	1	0
2	1500	1	1	1	0	1
3	1300	0	0	0	0	1
4	900	1	1	0	0	0
5	700	0	1	0	0	0
6	600	0	0	0	1	0
7	550	1	1	1	1	1
8	500	1	1	1	0	1
9	300	1	1	1	1	1

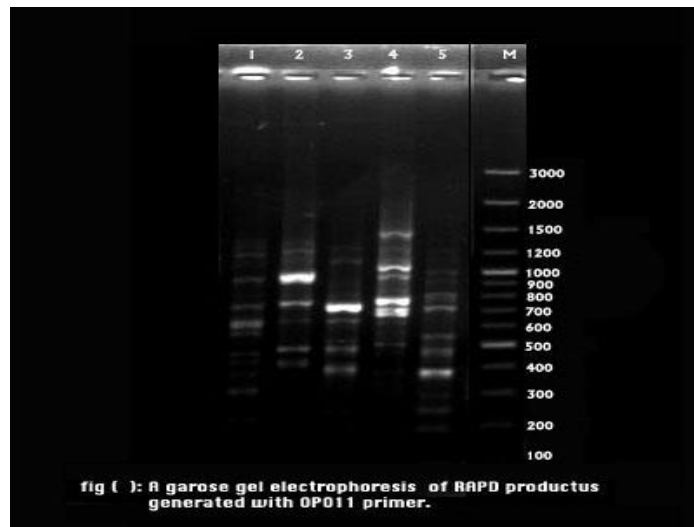


Fig (13): Agarose gel electrophoresis of RAPD products generated with OPA-20.

Table (9): Survey of RAPD markers using primer OPO-11 of five labrids specimens.

<i>Band No.</i>	<i>RAPD marker base pair</i>	<i>L. quadrilineatus</i>	<i>H. melapterus</i>	<i>T. rupellei</i>	<i>T. lunare</i>	<i>G. caeruleus</i>
1	1500	0	0	0	1	0
2	1300	0	1	0	0	0
3	1200	1	1	1	1	0
4	1100	0	0	1	1	0
5	1000	0	0	0	1	1
6	930	1	1	1	1	1
7	800	0	0	1	1	1
8	750	1	1	1	1	1
9	620	0	0	0	1	0
10	550	1	0	0	0	1
11	500	0	0	1	1	0
12	460	0	1	1	1	1
13	420	1	0	0	0	0
14	370	1	1	0	1	1
15	350	1	0	0	0	0
16	300	1	0	0	0	1
17	280	0	0	0	0	1
18	250	1	1	0	0	0
19	200	0	0	1	0	1

Table (10): Number of amplified and polymorphic DNA-fragments in the five specimens.

No.	Primer code	No. of amplified bands					Total amplified bands	No. of polymorphic bands	Polymorphism %
		(1) <i>L. quadrilineatus</i>	(2) <i>H. melapterus</i>	(3) <i>T. rupelliei</i>	(4) <i>T. lunare</i>	(5) <i>G. caeruleus</i>			
1	OPA-12	4	6	7	6	6	10	3	30.00
2	OPA-14	5	10	9	10	7	13	2	15.38
3	OPA-15	7	7	6	3	3	13	7	53.85
4	OPA-17	5	7	6	6	4	12	6	50
5	OPA-18	6	8	6	9	12	20	7	35
6	OPA-19	1	1	2	4	1	5	4	80
7	OPA-20	5	6	4	4	5	9	4	44.44
8	OPO-11	9	7	8	11	10	19	6	31.58
total		42	52	48	53	48	101	39	38.61

Table (11): Similarity Matrix UPGMA Jaccard's Coefficient.

	1	2	3	4	5
1	100				
2	53	100			
3	60	56	100		
4	42	57	55	100	
5	62	56	62	57	100

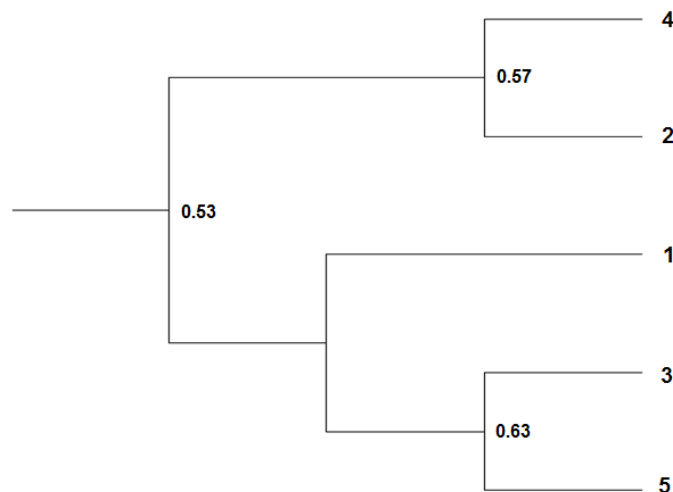


Fig (14): The evolutionary tree of the five marine fish species

الملخص العربي

الأنماط الوراثة وتحليل بلمرة الدنا العشوائي لخمس أنواع أسماك بحرية (عائلة: الملاص) من الشعب المرجانية في البحر الاحمر.

عبد الباسط مسعود عبيد ١ – علي حسين أبو المعاطي ٢ – محمد أبو الرجال ٣ – زينب عبد الخالق مرعي ٤

٤،١ معمل الوراثة الخلوية - قسم علم الحيوان - كلية العلوم بقنا - جامعة جنوب الوادي.

٢ قسم علم الحيوان - كلية العلوم ببورسعيد - جامعة بورسعيد. ٣ قسم علوم البحار - كلية العلوم ببورسعيد - جامعة بورسعيد.

تناول هذا البحث دراسة الفروق الوراثة بين خمس أنواع من اسماك البحر الاحمر تنتمي الى عائلة الملاص، من خلال اجراء الفحوص و المعاملات المختبرية الوراثة الدقيقة و الاسس العلمية الحديثة لتحديد اوجه التشابه و الاختلاف بين هذه الانواع من خلال تحديد العدد الكروموسومي الزوجي و الخرائط الصبغية للنوع محل الدراسة و تحديد بعض مقاطع الحمض النووي الذى اوكسى ريبوز (د.ن.أ) باستخدام تفاعل سلسلة البلمرة العشوائي لهذه الانواع ودراسة الفروق الجزيئية بين هذه الانواع من خلال استخدام ثمانية بادئات بطول عشر نيكليوتيدات و توضيح ايضا العلاقة التقاربية بين هذه الانواع داخل هذه العائلة.

أوضحت النتائج المتحصل عليها للانواع محل الدراسة أنه بالرغم من أن غالبية الانواع تحتوى على نفس عدد الصبغيات الوراثة وأيضا نفس الكاربيوتيب و نفس عدد الفتائل الصبغية الفعالة، كما فى أنواع ملاص رباعى الخطوط و ملاص عريض الشفه و ملاص أبو ربيع و ملاص قمرى و ملاص البحر الاحمر الطائر $2n=48$ ، $FN=48$ و الكاربيوتيب عبارة عن مجموعة واحدة من الكروموسومات الطرفية الا ان استخدام تفاعل سلسلة البلمرة العشوائي لهذه الانواع أوضح وجود درجات متفاوتة من التقارب و الاختلاف بين هذه الانواع، فمثلا درجة التقارب بين ملاص رباعى الخطوط و الانواع التالية وهى ملاص عريض الشفه و ملاص أبو ربيع و ملاص قمرى و ملاص البحر الاحمر الطائر هى ٥٣%، ٦٠%، ٤٢% و ٦٢%.

وتعتبر هذه الدراسة مدخلا جديدا لاسس علم التصنيف الذى بنى على الوسائل الحديثة و هى استخدام التقنية الوراثة الحديثة فى تدعيم التصنيف التقليدى الذى يعتمد على الصفات المورفولوجية و التشريحية.